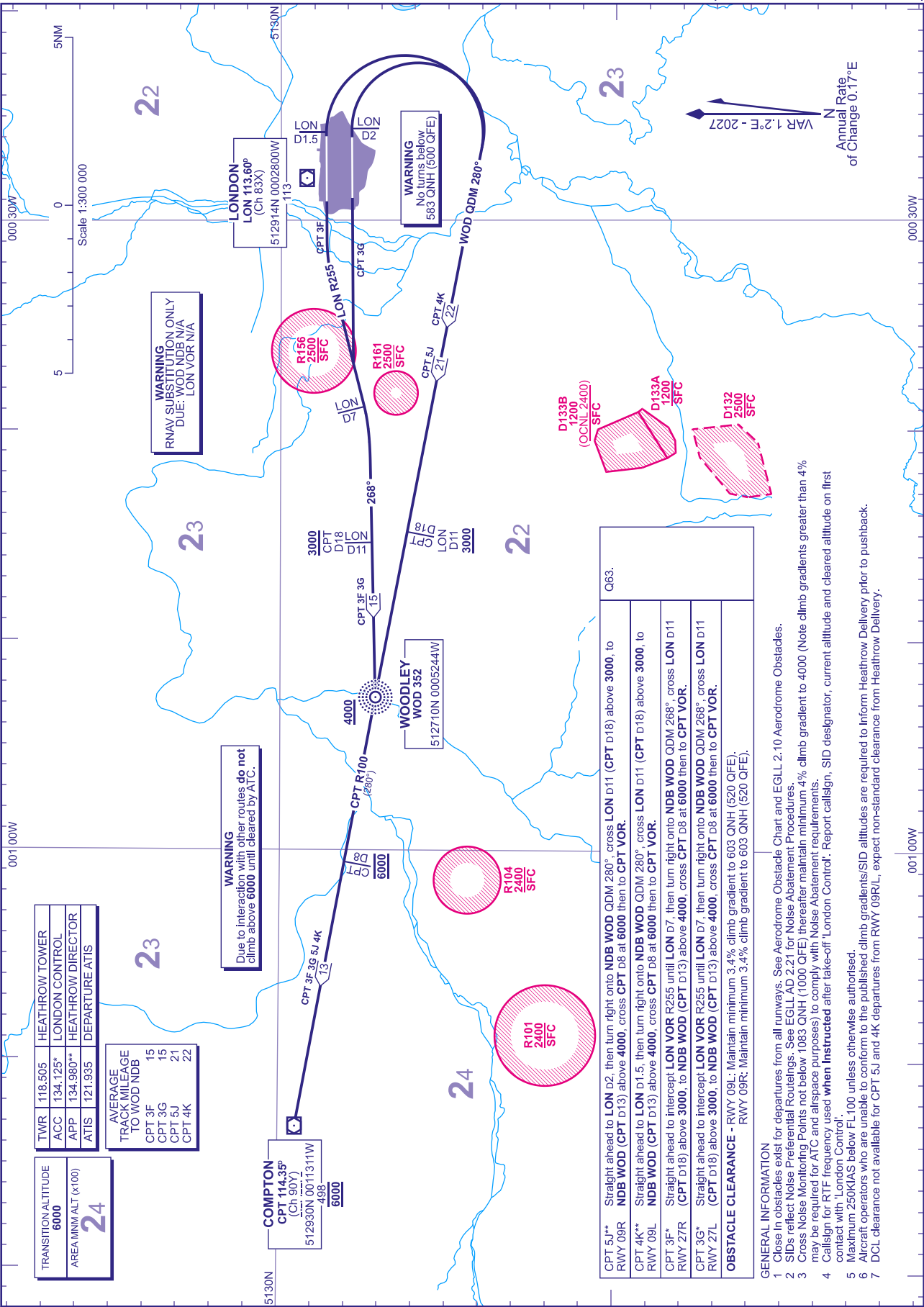


STANDARD DEPARTURE CHART -
INSTRUMENT (SID) - ICAO

DISTANCES IN NAUTICAL MILES
BEARINGS, TRACKS AND RADIALS ARE MAGNETIC
ALTITUDES AND ELEVATIONS IN FEET

LONDON HEATHROW
RWY 09R/L RWY 27R/L
CPT 5J 4K 3F 3G
(RNAV SUBSTITUTION ONLY)



CHANGE (1/26): RESTRICTED AREA EGR161 ADDED.

AERO INFO DATE 05 NOV 25

- GENERAL INFORMATION**
1. Close in obstacles exist for departures from all runways. See Aerodrome Obstacle Chart and EGLL 2.10 Aerodrome Obstacles.
 2. SIDs reflect Noise Preferential Routings. See EGLL AD 2.21 for Noise Abatement Procedures.
 3. Cross Noise Monitoring Points not below 1083 QNH (1000 QFE) thereafter maintain minimum 4% climb gradient to 4000 (Note climb gradients greater than 4% may be required for ATC and airspace purposes) to comply with Noise Abatement requirements.
 4. Call sign for RTF frequency used when **Instructed** after take-off 'London Control'. Report call sign, SID designator, current altitude and cleared altitude on first contact with 'London Control'.
 5. Maximum 250KIAS below FL100 unless otherwise authorised.
 6. Aircraft operators who are unable to conform to the published climb gradients/SID altitudes are required to Inform Heathrow Delivery prior to pushback.
 7. DCL clearance not available for CPT 5J and 4K departures from RWY 09R/L, expect non-standard clearance from Heathrow Delivery.

AD 2-EGLL-6-1